



## FAEIS Newsletter

January 8, 2009

### In This Issue:

[FAEIS 2008 Surveys Are Open](#)

[Citizenship of Family and Consumer Science/Human Science Faculty and PhD Students](#)

[FAEIS Peer Panel Meeting](#)

Greetings from the FAEIS team at Virginia Tech. If you are not familiar with this important project from USDA/CSREES, [click here](#) to read about FAEIS and why it is important to you.

### Scheduled System Maintenance

FAEIS systems will be shut down for scheduled maintenance between Friday, January 9, at 8pm(Eastern) and Monday January 12 at 8AM(Eastern). FAEIS public and password-protected websites may be unavailable during this period.

### FAEIS 2008 Surveys Are Open

The 2008 FAEIS Surveys are open for data entry, with the following components:

- Student Enrollments by Discipline - Fall, 2008
- Degrees Awarded - 2007/2008
- Placement of Graduates - 2007/2008
- Annual Faculty Survey
- College Total Enrollment - Fall, 2008
- International Programs

[Click here to see the status of your 2008 enrollment surveys](#)

### Login To FAEIS

To access your FAEIS surveys, go to <http://faeis.ag.vt.edu/FAEIS.cfm> and enter your FAEIS ID (your e-mail address) and password.

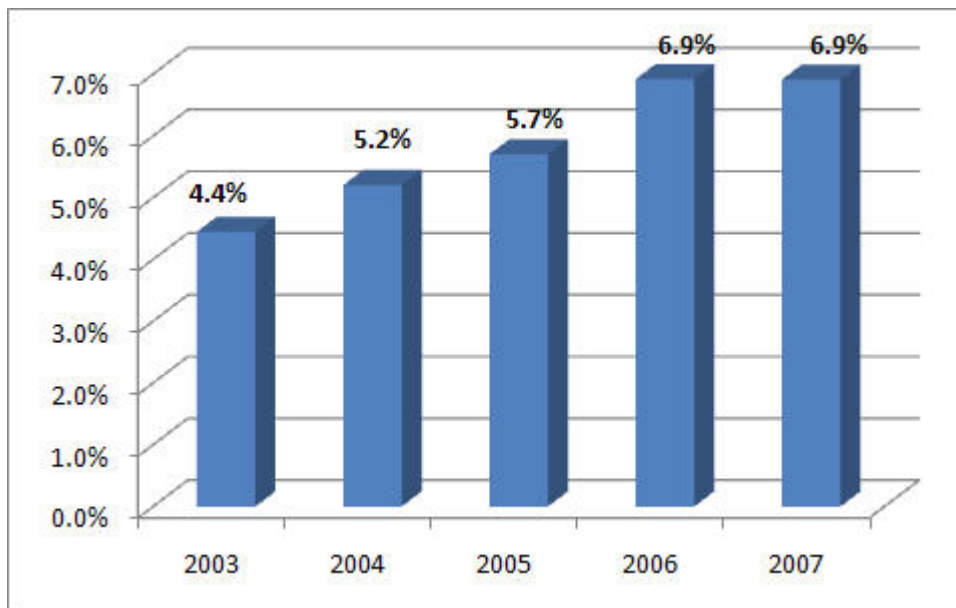
**Forgot your password?** Enter your e-mail address on the Login page and we'll send it to you.

### Citizenship of Family and Consumer Science/Human Science Faculty and PhD Students

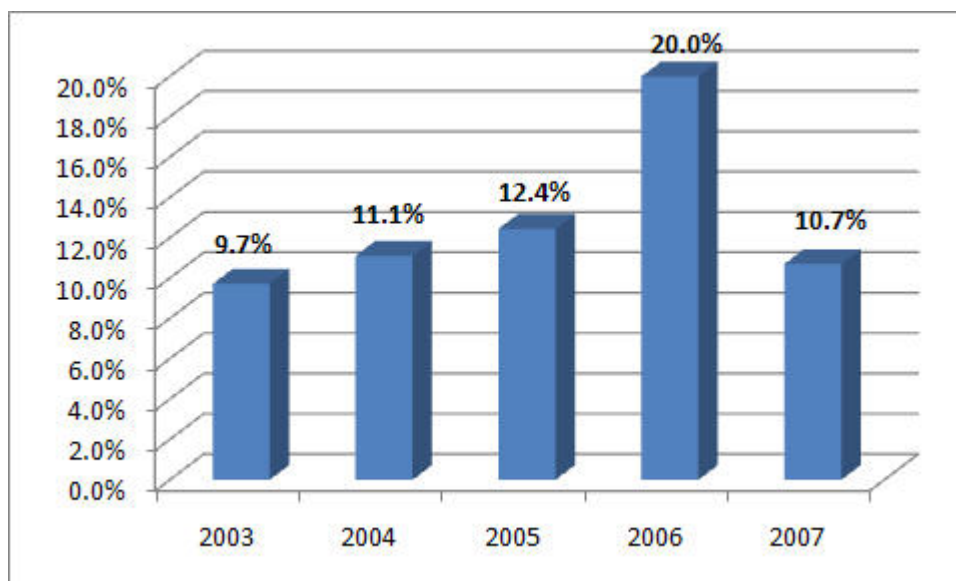
The percentage of Family and Consumer Science/Human Science (FCS/HS) faculty who are non-U.S. citizens has increased between 2003 and 2007. However, the overall percentage is still fairly low (6.9%). New faculty hires in FCS/HS, that are non-U.S. citizens were only 10.7% in 2007. Compare that to 26% for new Agriculture faculty that are non-U.S. citizens (see the [Nov.'08 FAEIS Newsletter](#)). The growth of non-U.S. citizen faculty members is occurring despite a downward trend in enrollment of non-U.S. citizen

PhD students. The charts below are derived from all the institutions reporting student and faculty surveys in FAEIS.

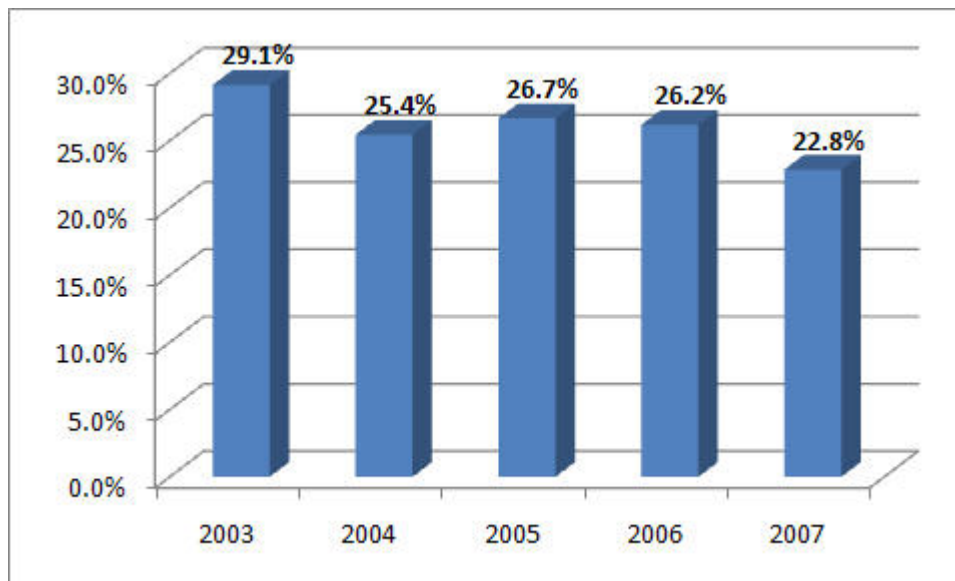
### Non-U.S. Citizen Component of Family and Consumer Science/Human Science Faculty



### Non-U.S. Citizen Component of New Faculty in Family and Consumer Science/Human Science



### Non-U.S. Citizen Component of Family and Consumer Science/Human Science PhD Enrolled Students



## FAEIS Peer Panel Meeting

The FAEIS [Peer Panel](#) held their annual meeting in Chicago on November 11-12, 2008. Minutes from the meeting can be viewed [here](#).

Have a question?

[Ask FAEIS](#)



[Food and Agricultural Education Information System](#)

Virginia Tech, Mail Code: 0169  
Corporate Research Center, Building VII  
Blacksburg, VA 24061  
Help Desk: (540) 231-4941  
[faeis@vt.edu](mailto:faeis@vt.edu), <http://faeis.usda.gov/>



Technology resources provided by [Agriculture, Human and Natural Resources Information Technology](#),  
College of Agriculture and Life Sciences, Virginia Tech