

## In This Edition >>>

- Graduate degrees awarded within agriculture.
- Graduate degrees awarded by the largest programs.
- Graduate degrees awarded by gender.
- Graduate degrees awarded by ethnicity.



Summer  
2014

Issue 28

# FAEIS News

## Graduate degrees at Land-grant institutions

For this edition of the FAEIS newsletter, we took a look at the trends in the number of masters' and doctorate degrees awarded in agriculture and natural resource colleges at 72 Land-grant institutions for the reporting years of 2004 through 2012. Data for the analyses of this newsletter was retrieved from the Food and Agricultural Education Information System.

## Growth in graduate degrees awarded at Land-grant institutions — All disciplines

We determined the growth in the number of masters' and doctorate degrees awarded in colleges of agriculture and natural resources compared to all graduate degrees awarded at Land-grant institutions.

Overall, the number of graduate degrees awarded in all program areas at Land-grant colleges and universities reflects significant increases since 2004.

- The number of masters' degrees awarded for **all program areas** at Land-grant institutions rose by 11,318 degrees (**18%**).
- The number of doctorate degrees awarded for **all program areas** at Land-grant institutions rose by 6,835 degrees (**29%**).

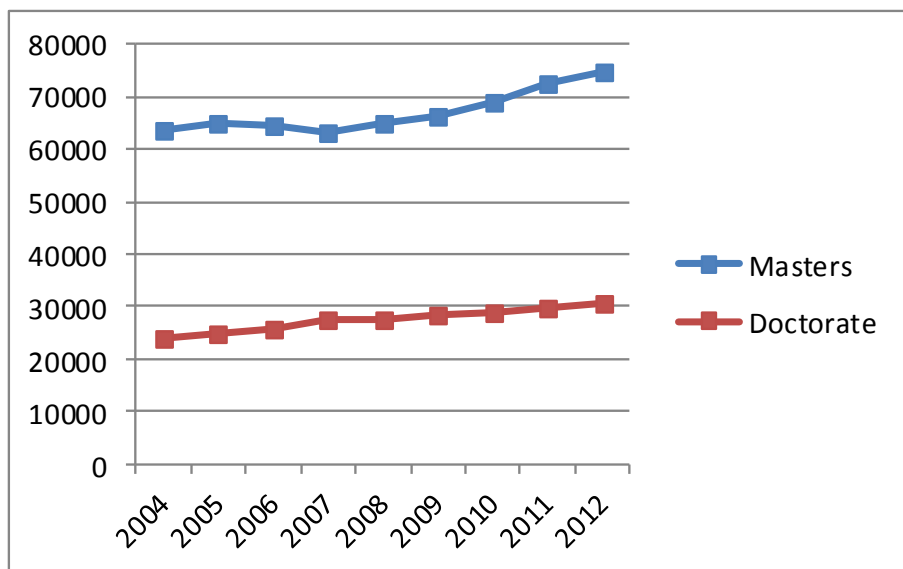


Figure 1. Total Graduate Degrees Awarded at Land-grant Institutions

## Graduate degrees awarded — Agriculture and Natural Resources

From 2004 to 2012, there has been a slow growth rate in the number of degrees awarded for doctoral programs in colleges of agriculture and natural resources compared to all degree programs at Land-grant institutions.

- The number of **masters' degrees awarded for agriculture and natural resource colleges** at Land-grant institutions rose by 538 degrees (18%).
- The number of **doctorate degrees awarded for agriculture and natural resource colleges** at Land-grant institutions rose by 265 degrees (15%).

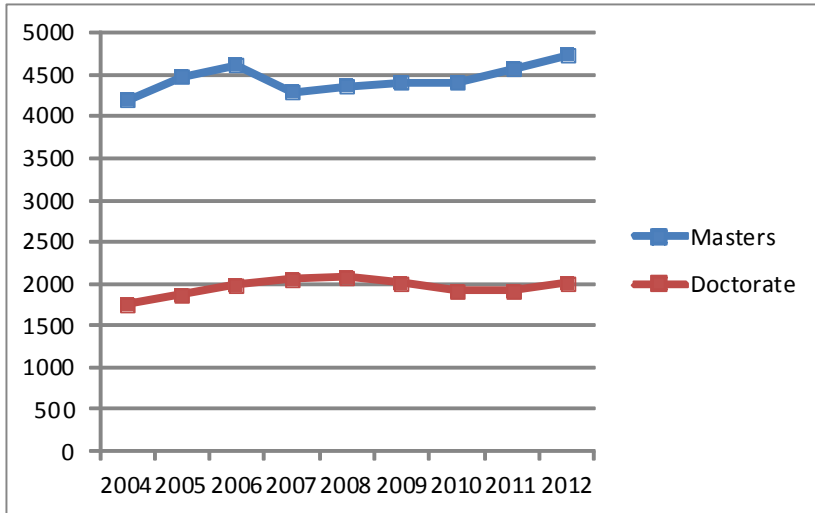


Figure 2. Total Graduate Degrees Awarded at Land-grant Institutions for Colleges of Agriculture and Natural Resources

### Masters' degrees awarded by largest academic programs

We went a step further and examined the trends among the number of graduate degrees awarded for the largest academic areas within Colleges of Agriculture and Natural Resources at Land-grant institutions for 2004 to 2012. The top academic areas include:

- 1) Animal Sciences, 2) Agricultural Economics, Business, and Management, 3) Agricultural Public Services,
- 4) Food Science and Technology and 5) Plant Sciences.

- The academic area of **Food Science and Technology** showed the most growth in masters' degrees awarded with an increase of 72 degrees awarded (28%).
- The academic area of **Agricultural Economics, Business, and Management** increased by 85 degrees awarded (20%).
- The academic area of **Plant Sciences** increased by 63 degrees awarded (14%).
- The academic areas of **Animal Sciences** and **Agricultural Public Services** did not show any growth in masters' degrees awarded. Specifically, the number of masters' degrees awarded in Animal Sciences decreased by 40 degrees (-7%), however it is the top major. The number of masters' degrees awarded in Agricultural Public Services decreased by 71 degrees (-28%).
- Though the academic area of Food Science and Technology showed the most growth in masters' degrees awarded, its number of degrees awarded only increased enough to move it up from 5th to 4th in ranking.

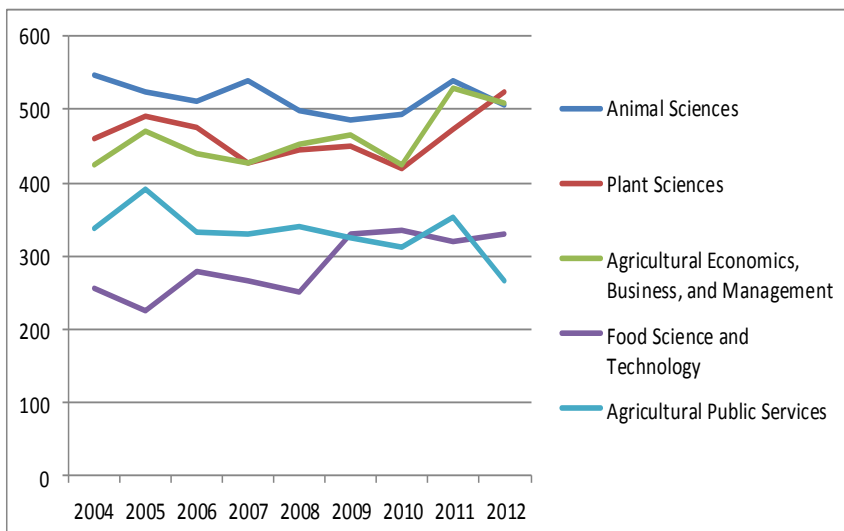


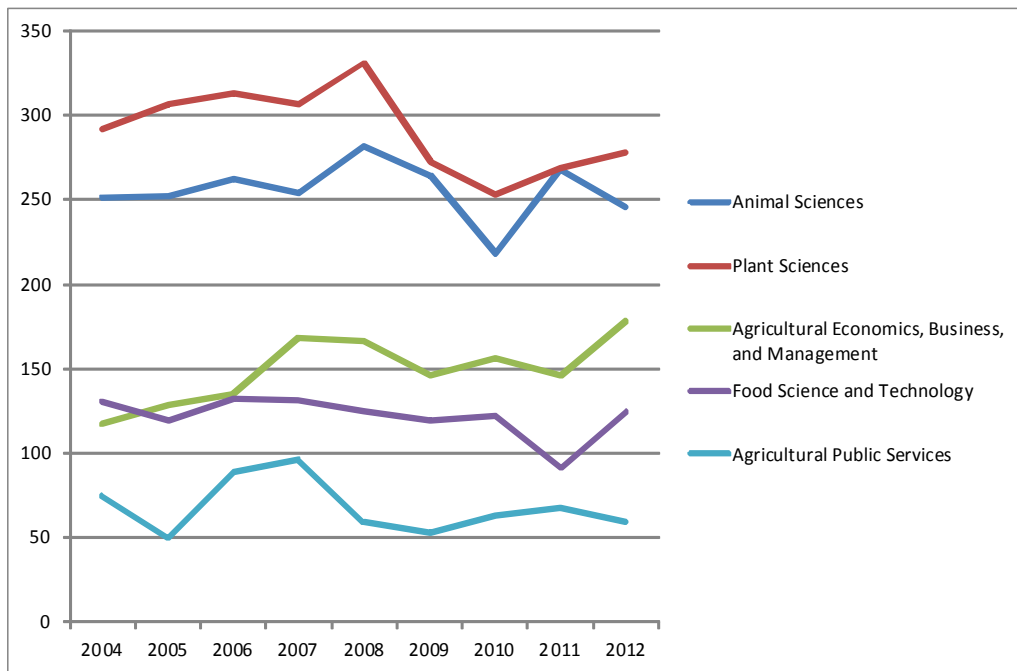
Figure 3. Masters' Degrees Awarded by Academic Areas for Colleges of Agriculture and Natural Resources at Land-grant Institutions

## Doctorate degrees awarded by largest academic areas

Based on our analysis of doctorate degrees, we found the following results:

- The academic area of **Agricultural Economics, Business, and Management** is the only area reflecting growth. Doctorate degrees awarded in this academic area increased by 61 degrees (**52%**).
- The number of doctorate degrees awarded for the academic area of **Animal Sciences** decreased by 5 degrees (**-2%**).
- The number of doctorate degrees awarded for the academic area of **Food Science and Technology** decreased by 5 degrees (**-4%**).
- The number of doctorate degrees awarded for the academic area of **Plant Sciences** decreased by 14 degrees (**-5%**).
- The number of doctorate degrees awarded for the academic area of **Agricultural Public Services** decreased by 16 degrees (**-21%**).

In recent years, doctorate degrees in Agricultural Economics, Business, and Management have become more sought-after. However, doctorate degrees in Plant Sciences, which currently has the most degrees awarded, have declined.



**Figure 4. Doctorate Degrees Awarded by Academic Areas for Colleges of Agriculture and Natural Resources at Land-grant Institutions**

## Graduate degrees awarded by gender — Agriculture and Natural Resources

We then investigated gender trends within graduate degrees awarded in agriculture and natural resource colleges at Land-grant institutions.

In 2004, 235 more females were awarded **doctorate degrees** than males in agriculture and natural resource colleges at Land-grant institutions. In 2012, females led by 379 degrees awarded. Comparing growth rates, females have experienced a growth of **19%**, while males experienced a growth of **14%**. Females are leading in masters' degrees awarded.

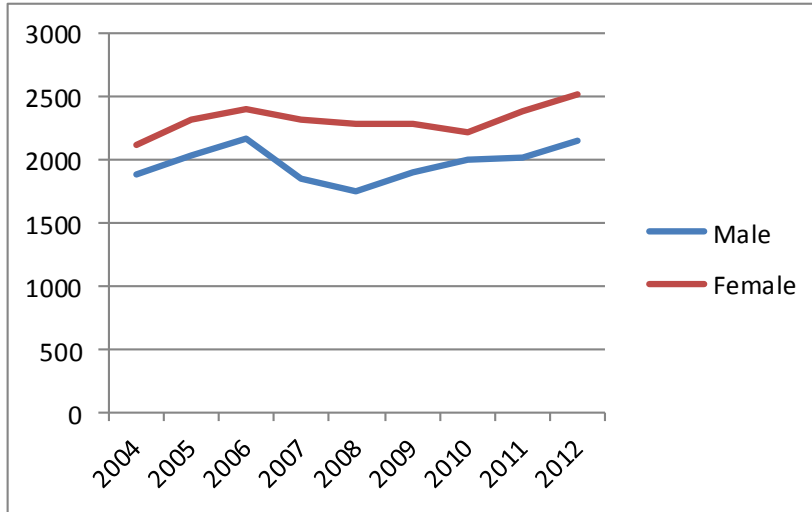


Figure 5. Masters' Degrees Awarded by Gender for Colleges of Agriculture and Natural Resources at Land-grant Institutions

In 2004, 374 more males were awarded **doctorate degrees** than females in agriculture and natural resource colleges at Land-grant institutions. In 2012, males only led by 65 degrees. Based on this, we predict in the near future females may surpass males in number of doctorate degrees awarded. Additionally, the growth rate of doctorate degrees awarded for males since 2004 is **-0.4%**. However, females have experienced a rapid growth of **46%**. Though males led in doctorate degrees awarded, the rapid growth for females has brought the difference between the two to just **65 degrees** awarded in 2012.

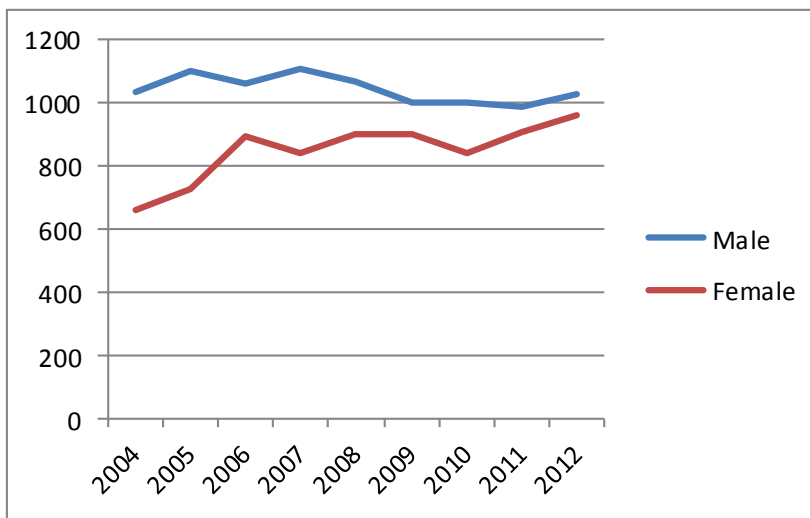
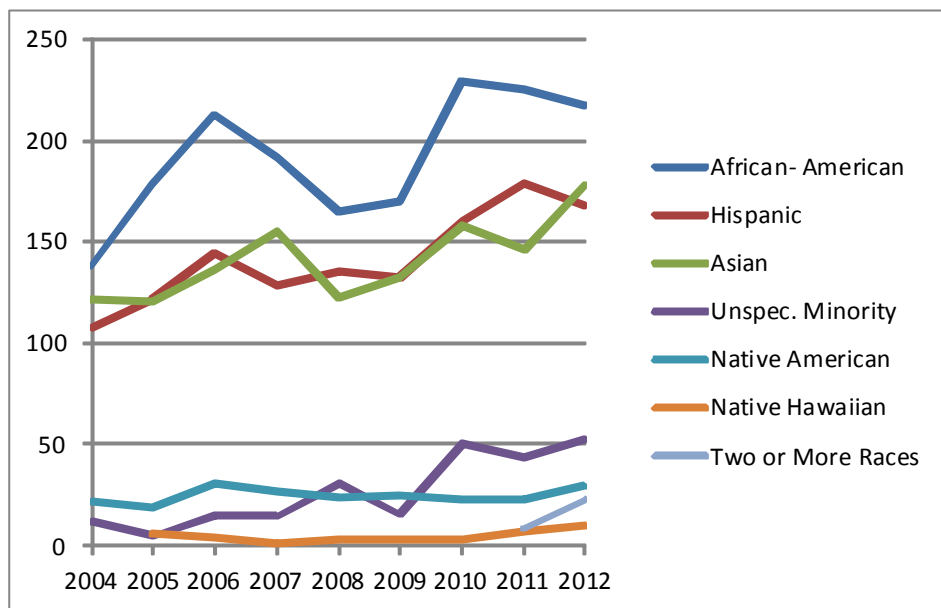


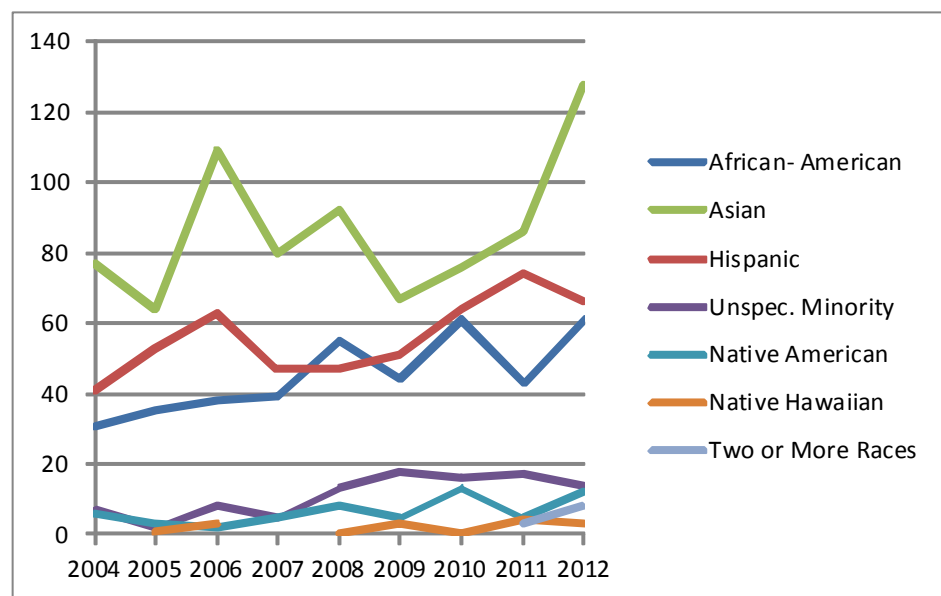
Figure 6. Doctorate Degrees Awarded by Gender for Colleges of Agriculture and Natural Resources at Land-grant Institutions

## Minority trends in graduate degrees — Agriculture and Natural Resources

From 2004 to 2012, the three **minorities** with the most growth were African-Americans, Hispanics, and Asians. For masters' degrees awarded, African-Americans grew the most with a total increase of **57%**. For doctorate degrees awarded, Asians grew the most with a total increase of **66%**. Hispanics came in second for most growth in masters' degrees awarded with a growth of **56%**, and third in doctorate degrees awarded with a growth of **61%**.



**Figure 7. Masters' Degrees Awarded to Minorities for Colleges of Agriculture and Natural Resources at Land-grant Institutions**



**Figure 8. Doctorate Degrees Awarded to Minorities for Colleges of Agriculture and Natural Resources at Land-grant Institutions**



## Contributors >>>

### **Editors**

*Dr. Mary A. Marchant  
William W. Richardson  
Teneisha Hodge-Wilson  
Demontre Purvis*

### **Data Analysts**

*William W. Richardson  
Teneisha Hodge-Wilson  
Demontre Purvis*

### **Writers and Graphic Designer**

*Demontre Purvis  
Teneisha Hodge-Wilson  
Kyle Malec*

### **The FAEIS Team**

*Dr. Mary A. Marchant  
William W. Richardson  
Dr. Eric Smith  
Dr. Eric A. Vance  
Teneisha Hodge-Wilson  
Claire Kelling  
Kyle Malec  
Demontre Purvis  
Chaoping Xie*

### **Photos provided by**

*Kelsey Kradel  
John McCormick*



**Masters' and Doctorate IPEDS Total Degrees at Land Grant Institutions**

	2004	2005	2006	2007	2008	2009	2010	2011	2012
<u>Degrees Awarded</u>									
Masters	63509	64966	64477	63402	65117	66489	68883	72473	74827
Doctorate	23746	24958	25901	27468	27616	28588	28866	29648	30581
Total	87255	89924	90378	90870	92733	95077	97749	102121	105408

**Masters and Doctorate Degrees Awarded at Land Grant Institutions for Colleges of Agriculture and Natural Resources**

	2004	2005	2006	2007	2008	2009	2010	2011	2012
<u>Degrees Awarded</u>									
Masters	4193	4469	4612	4281	4348	4410	4400	4567	4731
Doctorate	1756	1869	1999	2055	2097	2021	1926	1925	2025
Total	5949	6338	6611	6336	6445	6431	6326	6492	6756

## Masters and Doctorate IPEDS Total Degrees at Land Grant Institutions

	Masters								
Institution	2004	2005	2006	2007	2008	2009	2010	2011	2012
Alabama Agricultural and Mechanical University	262	312	319	279	256	234	219	240	195
Alcorn State University	168	169	147	127	143	162	138	195	161
Auburn University	788	791	867	816	849	865	963	1049	109
Clemson University	772	938	865	803	816	785	921	1007	106
Colorado State University	1011	1045	1090	965	1024	1225	1414	1390	156
Cornell University	1652	1544	1584	1701	1737	1800	1953	2163	215
Delaware State University	90	81	81	138	139	126	116	112	112
Florida A and M University	401	293	244	288	238	271	341	294	270
Fort Valley State University	69	37	69	32	22	39	53	42	50
Iowa State University	818	858	893	752	787	810	800	873	926
Kansas State University	713	755	724	679	803	868	872	989	979
Kentucky State University	42	52	31	47	47	40	54	44	64
Langston University	32	39	29	27	41	72	89	73	92
Lincoln University of Missouri	76	61	70	67	63	60	45	43	55
Louisiana State University	1072	1204	1094	998	977	973	1054	1100	123
Michigan State University	2091	2004	1867	1910	1817	1942	1936	1975	204
Mississippi State University	841	843	778	778	789	835	789	853	852
Montana State University	375	442	440	466	434	440	471	491	538
New Mexico State University	750	799	834	770	836	836	935	920	875
North Carolina Agricultural and Technical State University	299	306	339	324	437	377	356	351	358
North Carolina State University at Raleigh	1403	1332	1485	1457	1507	1664	1795	2080	2358
North Dakota State University	242	249	226	355	390	355	313	358	378
Oklahoma State University	995	1073	904	802	872	992	1007	1074	123
Oregon State University	760	778	659	621	674	648	727	745	774
Prairie View A&M University	686	671	696	737	699	745	559	532	445
Purdue University	1583	1548	1420	1377	1326	1321	1342	1501	162
Rutgers University- New Brunswick	1565	1576	1501	1441	1469	1545	1690	1793	195
South Carolina State University	142	144	115	125	98	115	123	116	130
South Dakota State University	283	293	251	287	275	272	279	282	315
Southern University and Agricultural and Mechanical College	263	303	342	307	305	312	283	294	294
Tennessee State University	442	398	471	328	419	401	381	365	404
Texas A&M University	1825	1949	1761	1768	1930	2016	2051	2236	212
The Ohio State University	2606	2685	2718	2635	2576	2679	2695	2778	314
The Pennsylvania State University	1252	1191	1150	1131	1267	1312	1419	1533	131



University	2010	2011	2012	2013	2014	2015	2016	2017	2018
University of California- Davis	810	873	854	882	873	824	865	912	989
University of California- Riverside	360	393	388	378	372	406	438	457	467
University of Connecticut	1129	1470	1398	1444	1437	1532	1465	1504	1603
University of Delaware	664	697	696	773	695	727	652	813	785
University of Florida	2961	2877	2985	3062	3337	3544	3751	3878	3924
University of Georgia	1528	1592	1564	1528	1554	1676	1571	1764	1689
University of Guam	100	48	69	60	67	92	121	134	129
University of Hawaii at Manoa	1040	1140	1163	1094	1141	1155	1169	1232	1223
University of Idaho	458	690	736	546	560	485	492	573	636
University of Illinois at Urbana-Champaign	2756	2622	2545	2582	2655	2677	3074	3100	3218
University of Kentucky	1242	1337	1350	1371	1311	1334	1211	1307	1231
University of Maine	454	475	506	475	465	398	451	424	442
University of Maryland	1990	1929	2001	1968	2059	2157	2303	2336	2451
University of Maryland Eastern Shore	77	62	75	58	74	76	49	79	78
University of Massachusetts	1058	1144	1149	1155	1215	1123	1189	1322	1305
University of Minnesota- St. Paul	2677	2798	2962	3019	3188	3115	3419	3379	3413
University of Missouri	1222	1195	1314	1350	1421	1506	1515	1513	1631
University of Nebraska- Lincoln	831	794	801	802	802	835	853	874	1017
University of Nevada- Reno	464	667	558	490	606	586	640	642	663
University of New Hampshire	714	703	806	816	807	843	790	800	772
University of Puerto Rico - Mayaguez	207	172	208	190	179	187	224	145	179
University of Tennessee	1737	1649	1656	1643	1556	1770	1714	1689	1773
University of Vermont	384	430	352	399	360	317	373	390	425
University of Wisconsin- Madison	2022	1996	1789	1944	1910	1811	1919	2156	2069
University of Wyoming	420	455	437	406	417	423	388	482	489
University of the District of Columbia	67	37	40	55	52	75	62	40	63
University of the Virgin Islands	42	57	51	48	53	40	55	34	53
Utah State University	905	811	847	738	852	696	831	862	990
Virginia Polytechnic Institute and State University	1444	1452	1456	1367	1525	1419	1548	1546	1603
Virginia State University	119	156	138	137	99	95	102	148	135
Washington State University	752	730	741	702	724	711	748	763	802
West Virginia State University			6	7	9	5	11	12	11
West Virginia University	1533	1499	1619	1459	1527	1481	1487	1631	1642
Total	63509	64966	64477	63402	65117	66489	68883	72473	74827

## Masters and Doctorate IPEDS Total Degrees at Land Grant Institutions

Institution	Doctorate								
	2004	2005	2006	2007	2008	2009	2010	2011	2012
	5	8	7	11	25	16	17	9	11
Alabama Agricultural and Mechanical University									
Alcorn State University									
Auburn University	309	363	361	411	420	437	430	433	477
Clemson University	113	131	136	138	145	162	178	192	220
Colorado State University	286	325	321	340	342	352	334	340	362
Cornell University	678	740	754	752	752	785	779	782	775
Delaware State University				2	4	14	7	5	15
Florida A and M University	133	190	225	224	276	306	313	332	331
Fort Valley State University									
Iowa State University	228	339	387	393	413	429	421	502	520
Kansas State University	253	245	266	258	265	255	245	269	267
Kentucky State University									
Langston University			3	2	7	11	15	14	13
Lincoln University of Missouri									
Louisiana State University	539	498	578	535	505	500	563	504	624
Michigan State University	774	774	768	855	770	876	921	951	962
Mississippi State University	136	159	170	161	182	190	216	212	212
Montana State University	42	40	40	56	52	45	45	56	53
New Mexico State University	78	96	79	85	72	71	91	105	102
North Carolina Agricultural and Technical State University	21	7	12	6	32	33	21	20	29
	414	416	444	486	402	530	501	470	525
North Carolina State University at Raleigh									
North Dakota State University	97	90	130	151	179	154	168	183	180
Oklahoma State University	277	242	245	262	220	250	285	270	296
Oregon State University	275	258	284	307	291	306	310	315	349
Prairie View A&M University		2	1	10	10	19	13	15	17
Purdue University	662	763	785	837	840	882	845	924	880
Rutgers University- New Brunswick	553	522	559	605	679	667	642	637	632
South Carolina State University	30	27	19	39	13	29	21	17	10
South Dakota State University	80	75	73	76	83	84	100	90	107
Southern University and Agricultural and Mechanical College	11	14	11	8	9	18	20	23	43
Tennessee State University	26	58	44	46		59	79	67	72
Texas A&M University	633	651	660	727	723	717	703	739	790
The Ohio State University	1342	1432	1549	1501	1611	1617	1596	1658	162
The Pennsylvania State University	539	571	646	664	643	703	718	736	755
The University of Rhode Island	157	154	154	170	155	183	205	196	229
Tuskegee University	52	54	52	64	52	60	64	64	71
University of Alaska- Fairbanks	20	25	21	33	29	37	45	46	50
University of Arizona	702	696	698	814	778	824	824	813	850
University of Arkansas	228	305	280	254	274	282	286	288	295
University of Arkansas at Pine Bluff									
University of California- Berkeley	1169	1151	1110	1280	1218	1216	1245	1292	126

University of California- Davis	770	791	812	876	900	894	891	927	1002
University of California- Riverside	141	159	165	177	224	188	195	235	263
University of Connecticut	510	554	629	609	576	687	746	720	773
University of Delaware	177	189	222	224	208	251	230	252	262
University of Florida	1658	1665	1732	1957	2107	2028	2127	2127	1954
University of Georgia	833	818	828	858	832	897	854	889	903
University of Guam									
University of Hawaii at Manoa	259	310	321	320	369	353	351	411	406
University of Idaho	173	194	194	210	190	184	168	165	164
University of Illinois at Urbana-Champaign	882	971	998	1018	1067	1081	1066	1106	1210
University of Kentucky	605	670	634	653	717	719	734	783	888
University of Maine	40	40	38	50	50	58	52	55	65
University of Maryland	513	541	631	679	683	617	643	614	657
University of Maryland Eastern Shore		5	18	13	13	28	30	46	53
University of Massachusetts	274	267	253	293	291	255	281	282	305
University of Minnesota- St. Paul	1307	1455	1536	1667	1563	1594	1618	1692	1680
University of Missouri	582	562	569	582	629	613	626	671	666
University of Nebraska- Lincoln	367	372	373	398	382	399	417	426	391
University of Nevada- Reno	127	142	151	128	131	177	150	161	176
University of New Hampshire	46	63	55	59	48	56	64	60	58
University of Puerto Rico - Mayaguez	6	7	12	8	19	26	26	15	18
University of Tennessee	813	790	873	895	912	994	1024	1002	1110
University of Vermont	143	147	158	154	165	185	213	208	207
University of Wisconsin- Madison	1213	1314	1261	1425	1407	1430	1355	1417	1514
University of Wyoming	173	177	175	179	191	200	179	188	197
University of the District of Columbia									
University of the Virgin Islands									
Utah State University	64	69	81	85	97	88	93	117	99
Virginia Polytechnic Institute and State University	383	415	452	445	429	521	490	499	560
Virginia State University				5	9	7	6	6	3
Washington State University	327	354	339	394	377	386	373	407	380
West Virginia State University									
West Virginia University	498	496	519	544	559	553	598	598	601
Total	3746	24958	25901	27468	27616	28588	28866	29648	3058

# Masters and Doctorate Degrees Awarded at Land Grant Institutions

	Masters								
<u>Institution</u>	2004	2005	2006	2007	2008	2009	2010	2011	2012
Alabama Agricultural and Mechanical University	32	21	40	39	33	31	33	40	21
Alcorn State University	3	3	2	5	1	2	7	10	6
Auburn University	50	57	56	52	57	52	74	71	63
Clemson University	74	68	70	67	51	73	85	68	80
Colorado State University	109	118	121	106	145	111	91	120	114
Cornell University	104	123	393	158	147	131	132	100	89
Delaware State University		1	4	6	6	16	6	4	16
Florida A and M University	12	9	4	12	6	5	14	6	9
Fort Valley State University	3	1		1	3	4	4	3	12
Iowa State University	79	96	116	71	93	100	90	98	74
Kansas State University	118	92	69	67	93	94	106	103	101
Kentucky State University	3	0	2	2	6	5	3	6	16
Louisiana State University	100	107	117	115	120	88	55	71	80
Michigan State University	163	166	119	143	71	113	252	125	178
Mississippi State University	86	60	80	61	79	105	90	108	102
Montana State University	65	76	66	81	60	40	55	64	39
New Mexico State University	73	67	75	67	71	69	70	84	59
North Carolina Agricultural and Technical State University	34	33	33	33	53	38	39	41	61
North Carolina State University at Raleigh	167	249	203	207	166	211	194	246	251
North Dakota State University	49	48	28	44	49	33	20	43	60
Oklahoma State University	61	86	56	52	95	92	105	111	118
Oregon State University	90	126	100	92	94	80	86	90	109
Prairie View A&M University	29	30	52	25	16	11	56	18	27
Purdue University	120	111	101	100	127	115	96	132	133
Rutgers University- New Brunswick	64	45	63	70	48	55	37	47	61
South Carolina State University			1	0	0	0			9
South Dakota State University	48	56	53	55	45	47	44	41	45
Southern University and Agricultural and Mechanical College	6	8	6	2	1	3	10	12	2
Tennessee State University	4	2	8	9	3	3	3	6	18
Texas A&M University	207	217	206	200	216	239	233	219	225
The Ohio State University	28	30	8	11	21	11	18	24	58
The Pennsylvania State University	69	68	117	39	69	60	61	72	52
The University of Rhode Island	45	60	74	51	51	46	40	61	66
Tuskegee University	12	24	30	17	26	26	19	21	15
University of Alaska- Fairbanks	6	29	24	14	19	19	9	21	19
University of Arizona	69	81	44	102	99	96	65	73	62
University of Arkansas	97	80	88	72	84	101	79	75	81
University of Arkansas at Pine Bluff	12	12	5	8	9	7	4	6	20
University of California- Berkeley	18	19	15	19	20	13	21	12	25

University	2010	2011	2012	2013	2014	2015	2016	2017	2018
University of California- Davis	203	148	162	166	208	145	174	129	199
University of California- Riverside	31	34	27	21	27	37	52	19	12
University of Connecticut	31	34	27	46	42	38	31	39	47
University of Delaware	16	20	12	30	32	22	31	31	49
University of Florida	153	279	237	208	243	249	247	243	167
University of Georgia	106	118	119	110	103	119	107	159	96
University of Guam	6	4	4	5	5	10	4	9	3
University of Hawaii at Manoa	27	35	35	50	40	36	20	39	56
University of Idaho	57	99	93	98	92	114	87	89	142
University of Illinois at Urbana-Champaign	103	105	106	111	102	97	123	142	145
University of Kentucky	68	110	58	77	55	70	52	59	67
University of Maine	52	48	87	87	64	43	67	72	69
University of Maryland	39	27	41	33	21	31	27	29	26
University of Maryland Eastern Shore	10	14	14	16	5	14	16	11	8
University of Massachusetts	40	38	55	38	28	66	33	76	55
University of Minnesota- St. Paul	129	123	89	76	104	121	82	84	103
University of Missouri	70	54	68	80	60	62	88	70	69
University of Nebraska- Lincoln	102	81	89	101	116	111	98	135	112
University of Nevada- Reno	28	27	33	32	23	23	39	31	8
University of New Hampshire	42	44	40	42	39	49	44	40	32
University of Puerto Rico - Mayaguez	30	33	36	34	34	32	27	24	18
University of Tennessee	62	50	57	57	95	99	63	58	82
University of Vermont	37	32	46	42	44	37	42	44	44
University of Wisconsin- Madison	99	122	97	84	75	75	73	84	82
University of Wyoming	19	25	25	28	23	25	23	36	37
University of the District of Columbia							2		1
University of the Virgin Islands	7	12	14	12	3	14	18	12	14
Utah State University	61	52	64	83	67	108	57	68	87
Virginia Polytechnic Institute and State University	107	87	106	87	95	91	118	120	152
Virginia State University			3	13	10	12	8	13	
Washington State University	78	69	55	86	68	58	74	70	81
West Virginia University	71	66	64	53	72	57	67	80	92
<b>Total</b>	<b>4193</b>	<b>4469</b>	<b>4612</b>	<b>4281</b>	<b>4348</b>	<b>4410</b>	<b>4400</b>	<b>4567</b>	<b>4731</b>

## Masters and Doctorate Degrees Awarded at Land Grant Institutions

<u>Institution</u>	Doctorate								
Alabama Agricultural and Mechanical University	2004	2005	2006	2007	2008	2009	2010	2011	2012
Alcorn State University	3	2	5	6	8	11	11	4	4
Auburn University									
Clemson University	23	18	19	25	24	20	27	26	26
Colorado State University	40	30	38	41	50	41	21	28	26
Cornell University	30	27	20	23	22	20	24	18	12
Delaware State University	102	101	174	119	123	70	85	55	84
Florida A and M University									
Fort Valley State University	5	4	7	4	1	1	1	4	4
Iowa State University									
Kansas State University	28	51	45	47	59	55	54	51	32
Kentucky State University	26	29	42	33	34	16	14	28	26
Louisiana State University									
Michigan State University	37	39	37	41	30	23	29	16	33
Mississippi State University	97	98	83	82	70	74	81	67	58
Montana State University	23	22	20	21	23	19	32	34	24
New Mexico State University	8	14	14	7	19	24	14	15	13
North Carolina Agricultural and Technical State University	8	5	8	10	8	3	4	10	9
North Carolina State University at Raleigh							0		8
North Dakota State University	79	77	75	113	64	105	101	98	91
Oklahoma State University	8	11	16	20	18	11	8	13	17
Oregon State University	21	40	36	30	30	27	29	33	29
Prairie View A&M University	41	37	51	56	36	46	39	45	38
Purdue University									
Rutgers University- New Brunswick	50	54	66	57	58	75	80	66	57
South Carolina State University	65	47	54	46	48	71	60	48	55
South Dakota State University									
South Dakota State University	17	15	15	17	18	16	19	9	18
Southern University and Agricultural and Mechanical College			0				1	1	5
Tennessee State University					0				
Texas A&M University	110	115	95	122	120	99	102	89	116
The Ohio State University	7	7	7	9	10	5	12	6	27
The Pennsylvania State University	63	43	57	45	61	65	53	43	86
The University of Rhode Island	10	8	18	7	6	9	16	13	7
Tuskegee University									
University of Alaska- Fairbanks	3	3	0	3	3	1	4	0	5
University of Arizona	20	33	42	64	51	54	31	41	35
University of Arkansas	29	23	13	25	22	18	22	22	13
University of Arkansas at Pine Bluff									
University of California- Berkeley	42	47	43	64	59	50	50	46	54

University	2015	2016	2017	2018	2019	2020	2021	2022	2023
University of California- Davis	69	123	129	117	133	130	110	119	159
University of California- Riverside	38	41	38	43	55	31	28	23	26
University of Connecticut	16	15	21	31	19	16	19	21	13
University of Delaware	7	5	9	3	9	9	1	12	7
University of Florida	86	85	83	93	114	88	129	137	97
University of Georgia	43	37	30	52	40	45	45	52	36
University of Guam									
University of Hawaii at Manoa	6	5	11	12	21	9	10	15	17
University of Idaho	4	9	29	33	28	26	27	18	24
University of Illinois at Urbana-Champaign	29	57	41	48	51	46	44	52	64
University of Kentucky	32	30	21	29	19	23	29	27	39
University of Maine	11	10	13	13	29	22	14	20	24
University of Maryland	26	18	25	25	27	27	23	18	20
University of Maryland Eastern Shore		1	5	3	6	3	9	6	2
University of Massachusetts	10	21	16	16	18	29	16	34	11
University of Minnesota- St. Paul	70	65	61	39	49	64	54	63	67
University of Missouri	30	29	37	37	35	37	34	33	25
University of Nebraska- Lincoln	43	47	44	27	36	41	28	54	48
University of Nevada- Reno	3	10	19	9	15	28	14	23	3
University of New Hampshire	10	10	5	18	13	18	14	8	19
University of Puerto Rico - Mayaguez									
University of Tennessee	11	13	11	11	31	20	9	13	14
University of Vermont	6	3	10	11	9	8	12	8	8
University of Wisconsin- Madison	98	127	136	117	148	155	132	107	110
University of Wyoming	6	4	6	10	6	11	4	7	17
University of the District of Columbia									
University of the Virgin Islands									
Utah State University	10	12	16	16	16	17	12	8	20
Virginia Polytechnic Institute and State University	51	30	39	44	43	51	41	61	66
Virginia State University									
Washington State University	30	50	30	49	27	25	27	31	50
West Virginia University	16	12	14	12	25	13	17	26	27
Total	1756	1869	1999	2055	2097	2021	1926	1925	2025